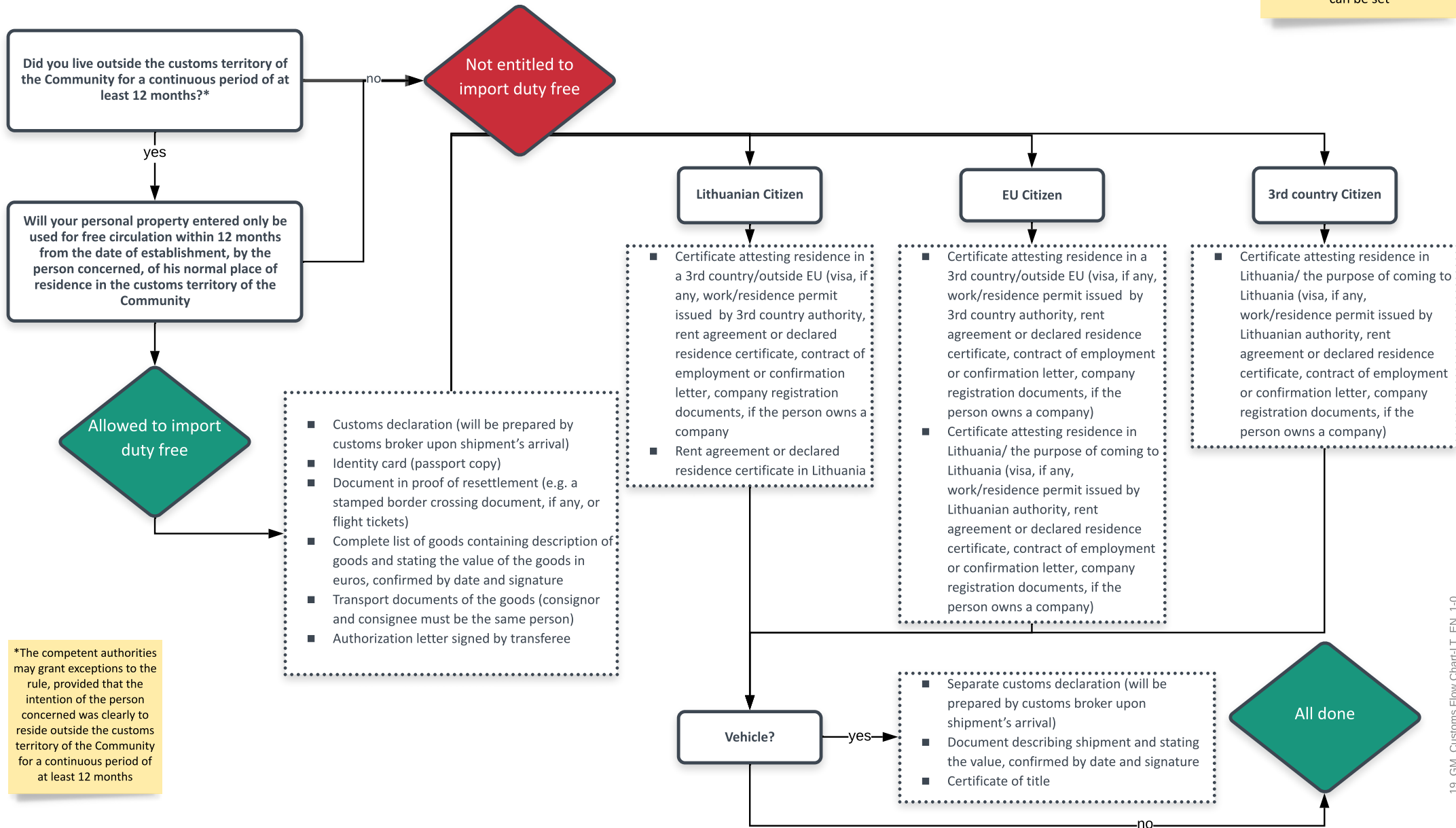


Are you entitled to import household goods/vehicles free of duties & taxes to Lithuania?

How long does the import clearance take?

Import customs clearance starts when the container has been registered at the port of entry terminal and takes about 2-7 days. Only once shipment cleared customs a delivery date can be set



*The competent authorities may grant exceptions to the rule, provided that the intention of the person concerned was clearly to reside outside the customs territory of the Community for a continuous period of at least 12 months